

# Feathered Friends



Approximate Design Area 16ins x 10.5ins [40 cm x 27cm]

This Blackwork/Cross stitch design contains a chart and instructions and can be stitched on 14 count Aida or 28 count Evenweave



Published by Catkin Embroidery Designs  
31 Cleeve Road, Knowle, Bristol BS4 2JR  
Tel: (0117) 971 5802 Fax (0117) 914 7160

Cross Stitch in:



Gold  
Black  
Steel Grey dk  
Green dk  
Pewter Grey vy dk  
Pewter Grey vy dk + Black

DMC

Gold Blending Filament  
310  
414  
986  
3799  
3799 + 310

Back Stitch in:

Gold  
Black  
Steel Grey dk  
Gold + Steel Grey dk  
Garnet dk  
Green dk  
Pewter Grey vy dk  
Pewter Grey vy dk + Black

Gold Blending Filament  
310  
414  
Gold Blending Filament + 414  
814  
986  
3799  
3799 + 310

### Additional Information

The DMC threads used in this design are as follows: -

310 - Black - 12 metres  
414 - Steel Grey Dk - 4 metres  
814 - Garnet Dark - 2 metres  
986 - Green Dk - 2 metres  
3799 - Dark Grey - 8 metres

Also a 35-metre card of Gold 7 blending Filament  
in the Madeira Glissengloss range.





## Catkin Embroidery Designs Blackwork Instructions

### General

In order to maintain an even tension it is advisable to use an embroidery frame or hoop. If you are leaving your work for some time, remember to release the fabric from the frame to prevent it being marked. In Blackwork it is essential to avoid carrying threads a long distance across the back of the fabric as it shows through the completed work.

### Getting Started

**Bind, tape or zig-zag** raw edges of material to prevent fraying. Fold the material into four, horizontally and vertically and pinch centre to mark design-starting point. Sort and identify threads, daylight is best for this. The six stranded thread can be separated into 1 or 2 strands as required. It is inadvisable to use lengths of more than 20 inches.

**Start working your design from the middle** so that it is centred on your material. Do not start with a knot. Blackwork consists of an outline usually in 2 strands, with an infill pattern that is usually in 1 strand. This is only a general rule and specific instructions for this design can be found in the design notes. It is a matter of personal preference whether the outline or the infill pattern is stitched first. For those who prefer to stitch the outline first it will be necessary to find the centre of the fabric and count squares (Aida) or threads (Evenweave) outwards to reach a starting point.

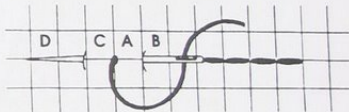
Please remember to weave loose threads into the back of the finished work to prevent them showing through the design when framed. Since Blackwork has so many areas of blank fabric incorporated into the design there is more danger of this happening than in any other embroidery techniques.

### Stitches

Note that the stitches below are illustrated on 14 count Aida, where the squares can be easily seen on the fabric. In the case of 28 count Evenweave or Jobelan remember to stitch over 2 x 2 threads.

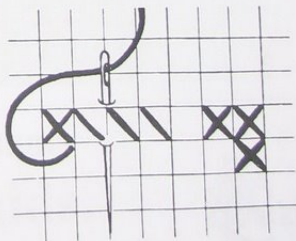
#### Back stitch

Represented by lines on the chart and can be stitched horizontally, vertically or diagonally. Bring needle up at A, down at B, up at C, down at A and up at D. Continue until outline is completed.



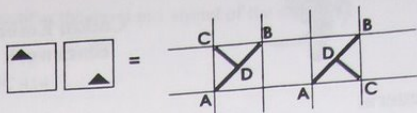
#### Cross stitch

The colour used is indicated by the symbol in the square which can be identified from the Chart Key. The direction these are worked in is not important PROVIDED all the top stitches are worked in the same direction i.e. left to right or right to left.



### 1/2 Cross-stitches

If the symbol is in the corner of the square with a diagonal line across the square, it indicates a half stitch. Bring the needle up at corner **A** and then diagonally down at the opposite corner **B**. Next bring the needle up at **C** and down at **D** in the centre of the square.



### Beads

Where a design uses beads, these are attached by a diagonal stitch through the bead in a single strand of toning cotton, using a beading needle or crewel No. 8.

### Special Aftercare Instructions

Natural oils from the skin may discolour the fabric after a time under glass. It is recommended that the work be gently hand washed in luke-warm water, using a mild detergent (non-biological and bleach free) rinsed well before excess water is squeezed out onto a towel. Whilst damp, iron face down on a thick towel. This prevents the stitching being flattened. Metallic threads and beads should have work covered with a cloth before being ironed face down.

We hope you enjoy working this design. A catalogue of other designs is available from the address below.



Satkin Designs

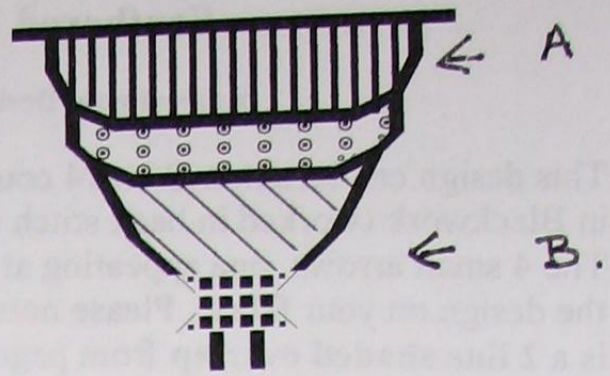
31 Cleeve Road,  
Knowle,  
BRISTOL BS4 2JR.



## Umbrella

Stitched mainly in DMC 310, part of the umbrella support has infill lines. The vertical lines at the top [part A] are in 1 strand of DMC 814.

The diagonal lines below [part B] are stitched in 1 strand of Gold blending filament and 1 strand of DMC 986.



## The Birds

These are stitched in DMC 310. The thicker lines are stitched in 2 strands and the thinner ones in 1 strand.

## Copyright Notice

All printed matter in this pack is the copyright of Catkin Embroidery Designs 2006 and may not be copied by any means or stored in any retrieval system without the express written permission of the publisher.



# Feathered Friends Stitching Notes

Approximate Design Size 16ins x 10.5 ins {40 cm x 26cm}

This design can be stitched on 14 count aida or 27/28 count evenweave over 2 x 2 threads and is stitched in Blackwork (worked in back stitch or stab-stitch) and cross-stitch

The 4 small arrows, one appearing at the edge of each of 4 pages of the chart, are to enable you to centre the design on your fabric. Please note that to make moving from 1 page of the chart to another easier there is a **2 line shaded overlap** from page 2 onwards, where the adjoining 2 lines from the previous page are duplicated

## General

In the Blackwork part of the design the thicker lines, usually outlines are stitched in 2 strands of the appropriate colour, the thinner lines e.g. the infill patterns are stitched in 1 strand. Where darker lines appear over the infill pattern these should be put in after the underlying infill pattern is completed.

**Cross-stitches** are in 2 strands of the thread shown in the key. Where a half-stitch is used, a diagonal line is shown across the square with the appropriate symbol behind it.

Where a shade other than **Black** is used in the Blackwork part of this design, instructions for each section are given below

## Kneeling Figure

Her **dress** is outlined in 2 strands of DMC 3799 and has an infill pattern stitched in 1 strand of the same.



The **cuff** of her sleeve is outlined in 2 strands of DMC 310.

Her **sash** or **obi** is outlined in 2 strands of DMC 814  
And the infill pattern is in 1 strand of the same.



## Lady Standing

Her **outer gown** has an infill pattern stitched in 1 strand of DMC 310

Some of the infills have a cross-stitch inside them stitched in 2 strands of gold blending filament.



The **undergown** is outlined at the bottom in 2 strands of DMC 414 and the infill pattern is in 1 strand of the same.



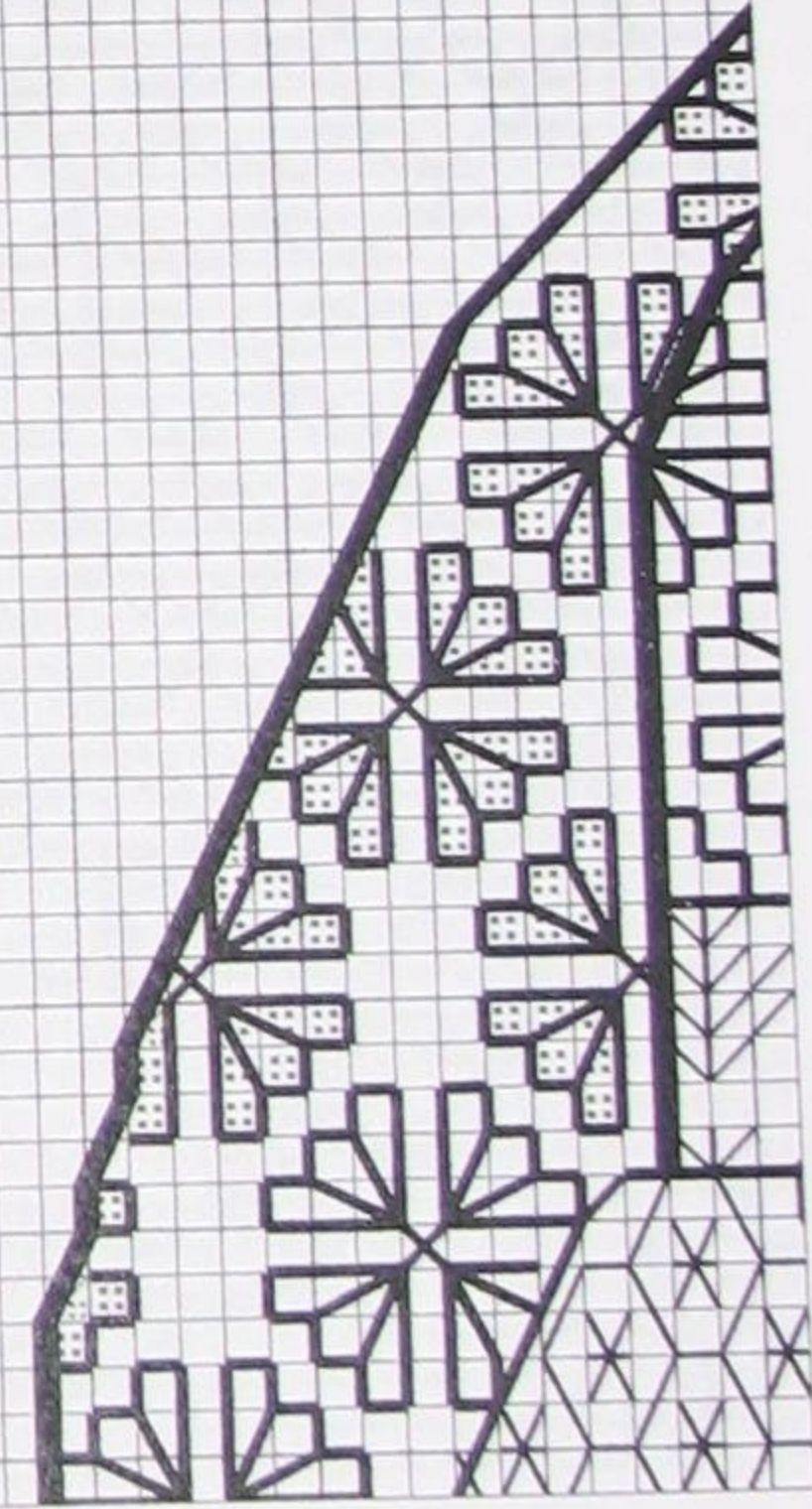
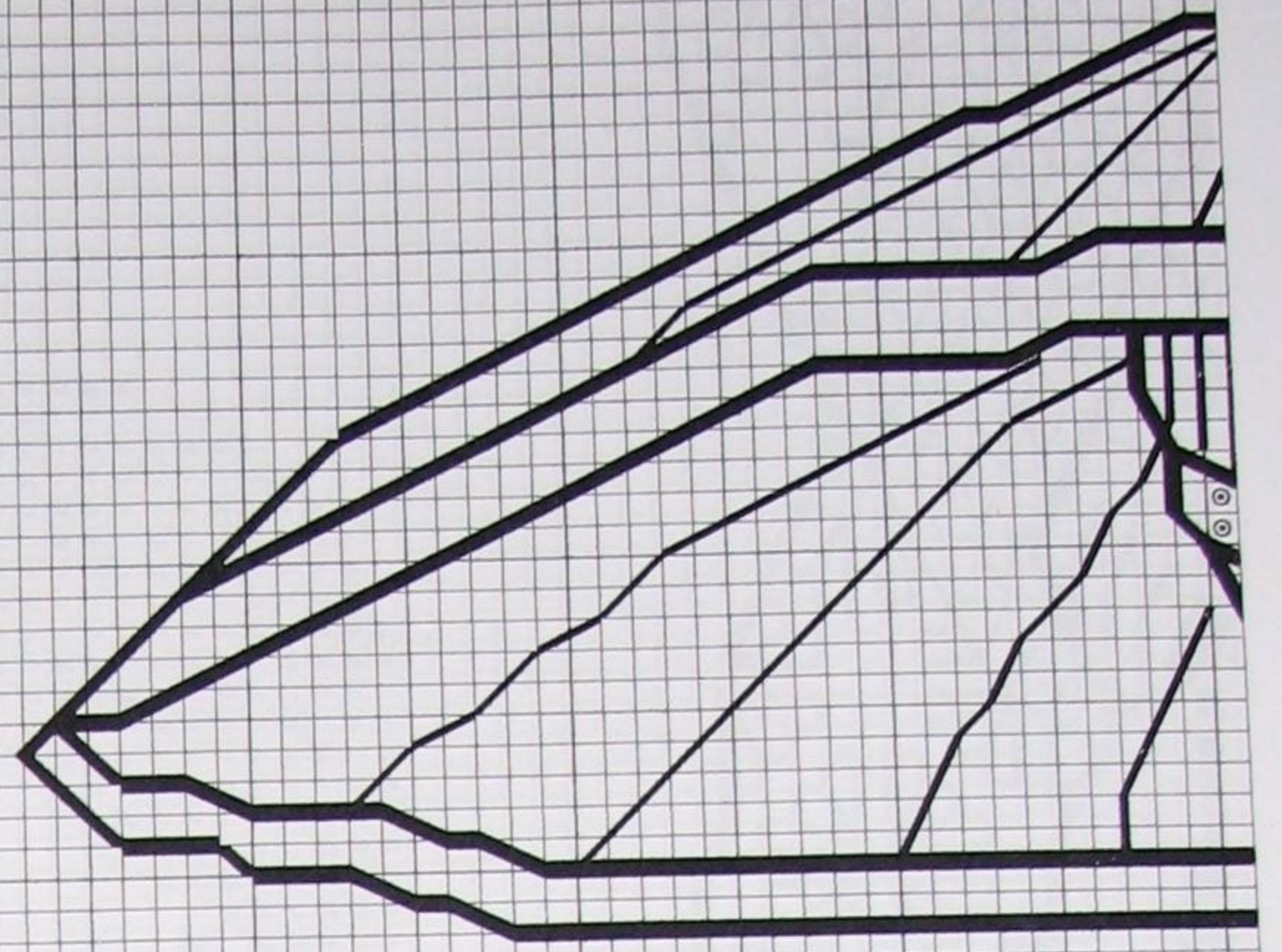
Her **sash** or **obi** is outlined in 2 strands of DMC 986  
And the infill pattern is in 1 strand of the same.



The **Sleeve cuffs** of her gown are outlined in and have an infill pattern stitched in 1 strand of gold blending filament and 1 strand of DMC 414.







Catkin Embroidery Designs  
**Feathered Friends**





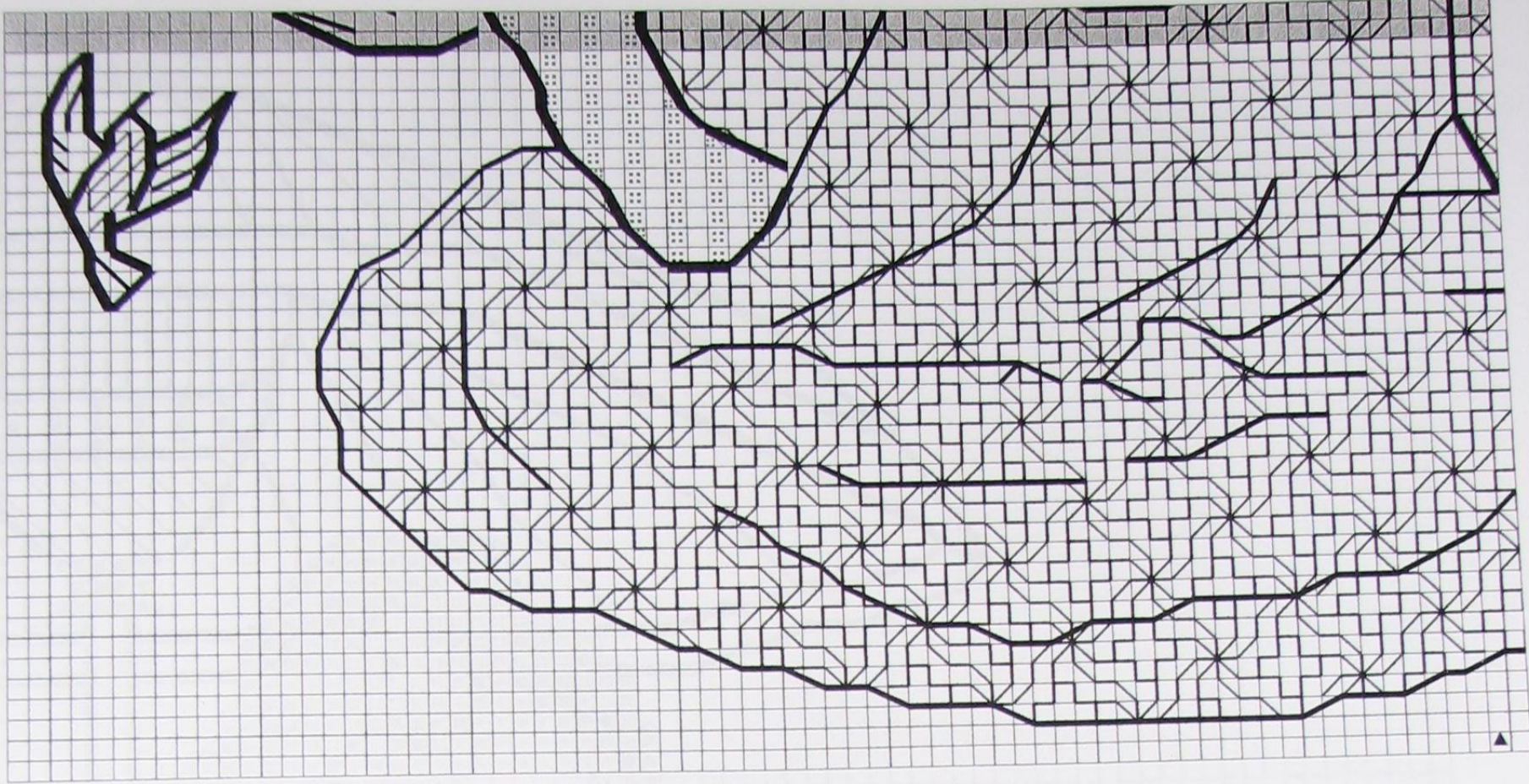


Catkin Embroidery Designs  
**Feathered Friends**



Please note that there is a **Two** row overlap at the top of this page





The outlining on the lady's face is in 2 strands of DMC 310 . It is printed here again, to show more clearly the half stitches used in the mouth and eyes.



Catkin Embroidery Designs  
**Feathered Friends** ©







Catkin Embroidery Designs  
**Feathered Friends**

©

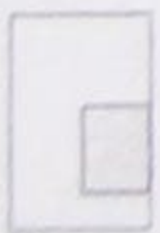


Please note there is a **two** row overlap at the left of this page





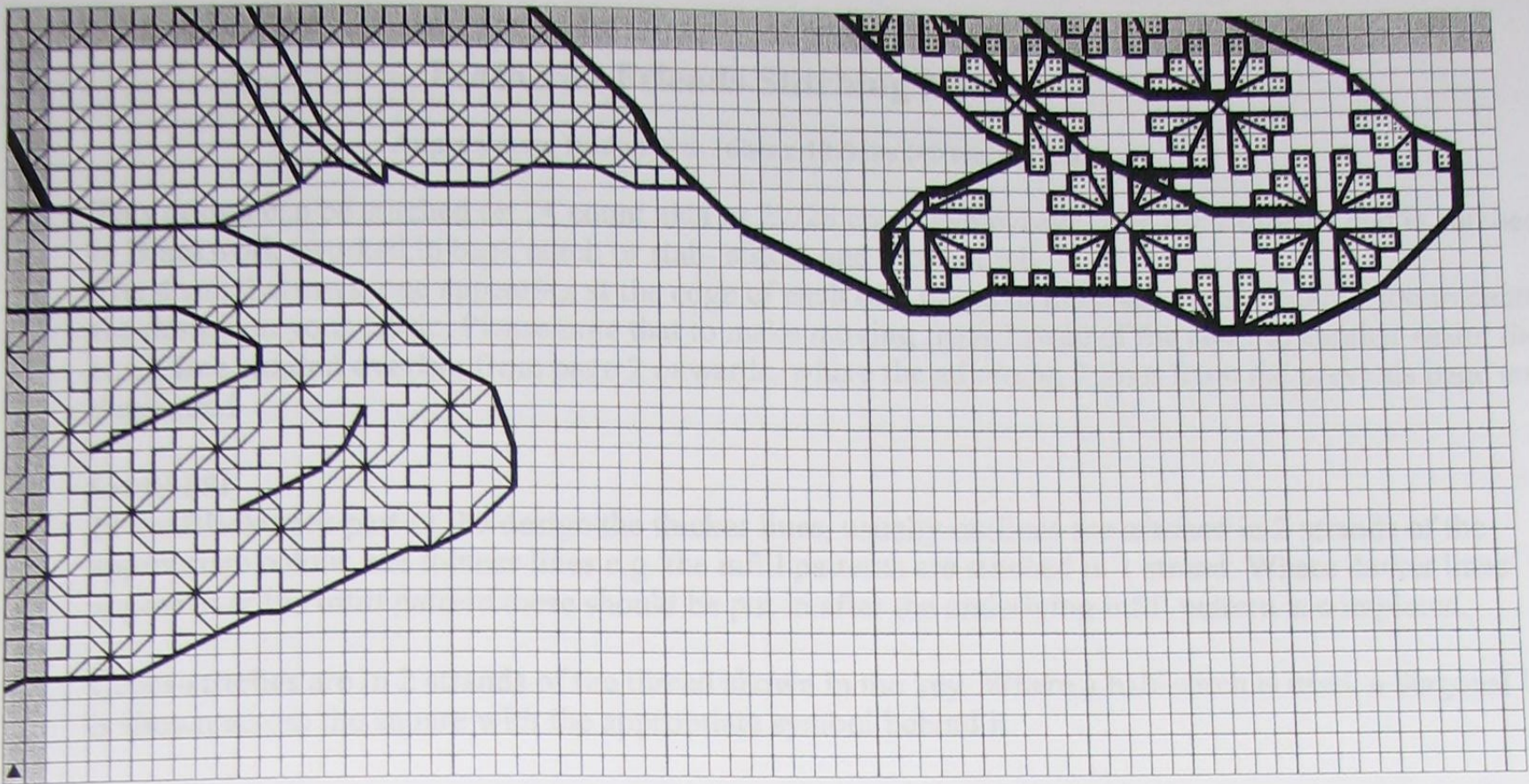
4



Catkin Embroidery Designs  
**Feathered Friends** ©



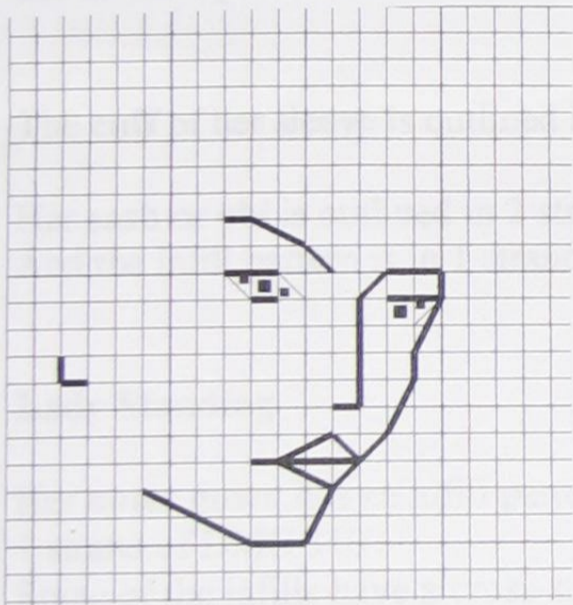




For each area other than black, black is used in the blackwork part of the design, continuing for each section as given below.

**Woolly Wings**

The area is outlined in 2 strands of DMC 3799 and has an infill pattern worked in 1 strand of the same.



The outlining on the lady's face is in 2 strands of DMC 310. It is printed here again, to show more clearly the half stitches used in the eyes.

Catkin Embroidery Designs

**Feathered Friends**

